

the Wheelagram



Materials Cleaning Systems Division
Wheelabrator-Frye Inc.

VOL. IV NO. 45
DECEMBER 5, 1980

A HOLIDAY FEAST — compliments of Wheelabrator-Frye — is in the offing when all active employees pick up their Christmas turkey and ham **Tuesday, December 16.**

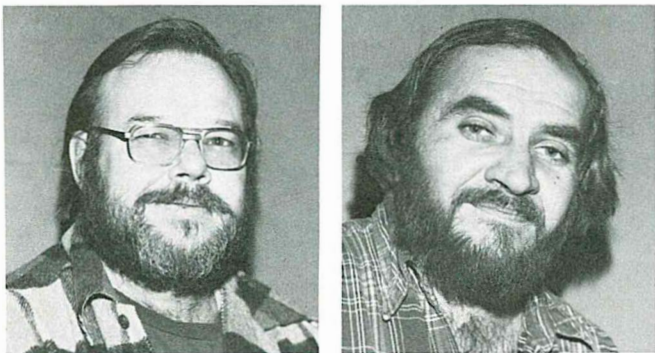
The pick up hours are between **6:30 a.m.** and **Midnight.** (Don't forget your identifying IBM card which you will turn in at this time.) Distribution locations are: From a trailer parked on the North Drive adjacent to the North Gate (from 6:30 a.m. til Midnight); inside the South Shipping Building from a trailer parked at Dock No. 9 (from 6:30 a.m. til 4:00 p.m.).

Employees who are ill or otherwise unable to pick up their own gift may designate a member of their family to pick up the turkey and ham for them. The person making the pick up should have both written authorization from the employee and the IBM card.



We wish you a Merry Christmas . . . We wish you a Merry Christmas!

QUALITY PERFORMANCES . . .



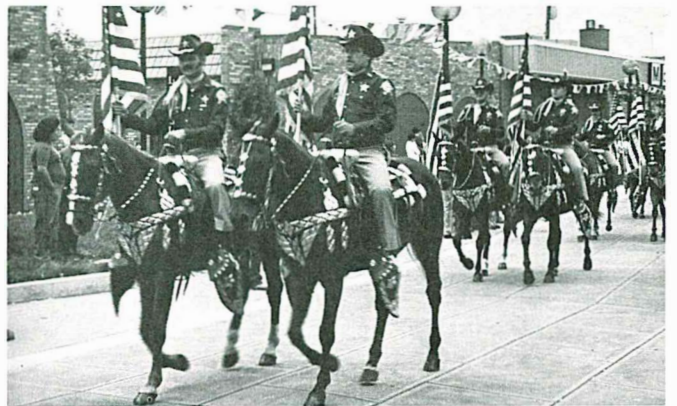
It's a tie for October's Melter of the Month. **Bob Smith** (l) and **John Svob** (r) accumulated the same number of points, based on established criteria, to be named "Melters" of the Month. Third shift Melters, John has over 7 years of company service; Bob over 14 years. Congratulations, John and Bob!

MACHINE SHOP'S SPIKE SINDERS TO RIDE IN ROSE BOWL PARADE . . .

Spike Sindera and fellow members of Indiana's Lake County Sheriff's Posse have been selected to participate in the 92nd Tournament of Roses Parade in Pasadena on New Year's Day. They have also been chosen to serve as the official Color Guard for the Rose Parade saluting "The Great Outdoors."

The group, formed in 1966, was selected from more than 900 applicants. In the past 14 years the group has gained national attention with their admirable record of competition achievement, one factor in their selection; another was their commendable and selfless record of helping others.

Members of the Sheriff's Posse are all commissioned police officers who assist Lake County Police and Sheriff's departments in Northwest Indiana. The group additionally contributes hundreds of hours each year to civic and charity organizations. Their annual Pony Express Ride, when they carry mail hundreds of miles across the State of Indiana to help raise funds for needy families, is well known.

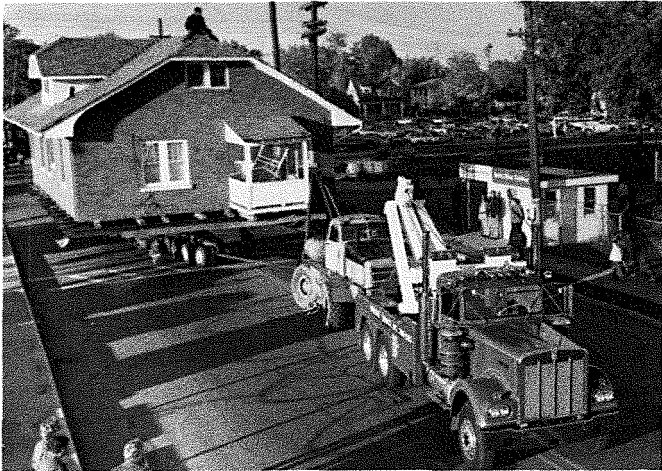


Indiana's Lake County Sheriff's Posse and WFI's Spike Sindera (front right).

NEW CHRYSLER CORPORATION OFFERS INCENTIVE . . .

In an effort to stimulate auto sales, Chrysler is offering to its suppliers and their employees a no-obligation opportunity to buy any new 1981 domestic Chrysler, Dodge or Plymouth vehicle at a sizable saving. Vehicles purchased by WFI employees between November 21, 1980 and December 31, 1980, will be eligible for a direct \$250 cash payment from Chrysler Corporation. This offer is a private one and will not be made to the general public. A special hotline has been set up to answer your questions: Call 800/521-7183.

THAT'S A WHEELABRATOR???



It's not unusual to have traffic stop by the North Gate allowing a massive piece of blast equipment to leave the plant and start its journey to a customer's facility; however, several weeks ago, we were all agog when traffic was stopped by the above house moving down Byrkit Street to its new location.

CHOCOLATE CHARLIE COMES TO WFI . . . Chocolate Charlie (candy, that is) comes to WFI this year via our Julianna Club. Proceeds from this sale are allocated to the Club's Scholarship Fund. Support the Julianna Club — see the following gals today for your Chocolate Charlie: **Lori Hardy**, North Shipping; **Sheri Peyla**, South Shipping; **Alta Myers**, Nurse's Station; **Clara Kovach**, South Office Building; **Lorrie Pfender**, Personnel; **Grace Tague**, Accounting & MIC; **Willa Mae Parker**, Production Control; **Mary Cook**, Purchasing; **Marsha Batten**, Engineering; **Sandy Fox**, Marketing. 12 oz. Chocolate Charlie — \$3.25; 1½ lb. Chocolate Charlie — \$6.50. Also available are tins of the annual favorite — Maurice Lenell Cookies at \$4.50 each.

PUZZLE CORNER . . .

In two fields, Farmer Bob has separate herds of cows. One herd consists of 8 white cows and 6 brown cows. In 19 days, they produce the same amount of milk as does the other herd — 6 white cows and 10 brown — in 8 days.

His neighbor, Farmer Don, has 4 white cows and 5 brown cows. They put their heads together and figured out that it takes this herd 40 percent longer to produce a quantity of milk than it would if he added . . . how many cows of what color?

**Solution to
November 21's puzzle:**

17	24	1	8	15
23	5	7	14	16
4	6	13	20	22
10	12	19	21	3
11	18	25	2	9

IT'S GOOD READING . . .

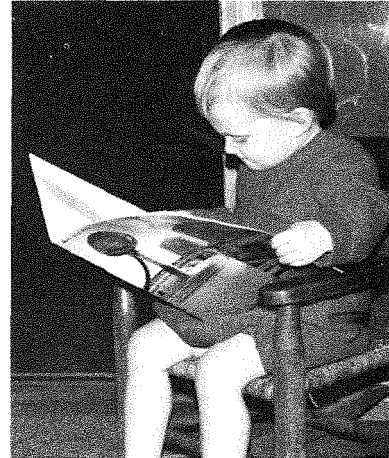


photo courtesy of Monte Visser

Two-year-old **Ike Ellis**, son of Controller **Dale Ellis**, spends his spare time reading. Here we find him going over WFI's Annual Report, although Dale did comment that son Ike does prefer our Children's Report, long recognized as a best seller in annual report circles.

DATES TO REMEMBER . . .

December 9 — Annual Plant Raffle drawing (all proceeds are allocated to the Plant Sick Fund). See your area AA rep for chances at a dollar a piece or two for \$1.50. First prize is a free pass to all Athletic Association events (Stag, Smokers, Dances, Bus Trips, Picnic) or \$100.

December 13 — Wheelabrator Children's Christmas Party. For the young set, a theatre party at Town & Country; for the teens, a roller skating party at Rainbow Roller Rink. This annual event for our kiddies is a freebie!

December 18 — Julianna Club Christmas Party. This year's party — "Calico Carousel" — will be held at Knollwood Country Club. Social Hour 6:00-7:00 p.m., dinner 7:00 p.m.



WFI BOWLING LEAGUE . . . November 18 results: Stockroom (**B. Trytko, J. Medich, A. Kristowski, D. Austin, G. Scott**) moves into first place with 30 wins, 14 losses. Team High Three Games (2908) North Shipping (**L. Young, R. Cukrowicz, O. Boembeke, B. Fore, C. VanBellegham**); Team High Game (1027) Rolling "5" (**F. Britton, E. Buss, D. Susan, G. Weston, J. Mumby**); Individual High Single Game (259) **W. Young**; Individual High Three Games (636) **L. Cookie**.

November 25 results: Holding onto first place with 34 wins, 14 losses, Stockroom. Team High Three Games (2908) North Shipping; Team High Game (1027) Rolling "5"; Individual High Single Game (259) **W. Young**; Individual High Three Games (649) **B. Trytko**.

RETIREMENTS . . . Our best wishes for long and happy retirements to:

Inez Lovely-Brashers, Balcrank's Machine Accessories Customer Service Supervisor, who retired November 14 with 33 years of company service.

Victor H. Stampone, Eastern Region Service Supervisor. Vic, with 20 years of service, retired on November 30.



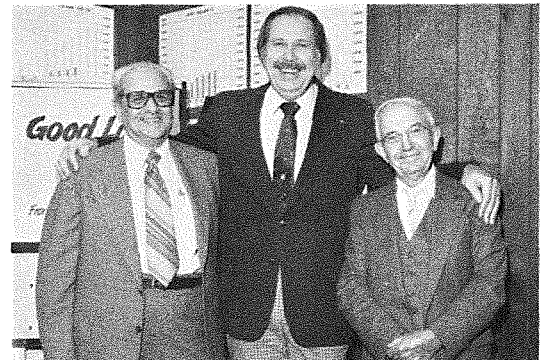
Balcrank Ingenuity — Balcrank Engineering and cohorts from throughout the plant designed and executed a special remembrance for Inez implementing Balcrank control handles and knobs — a nutcracker!



Ken Blessing and Inez exchanging views — probably on retirement.



Inez, her very own nutcracker, and Balcrank Engineering troops (l to r): **Ken Rinkenberg, Dave O'Dell, John Pokorski, and Dennis Somerville.**

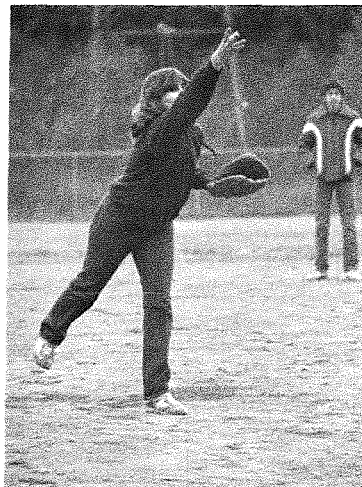
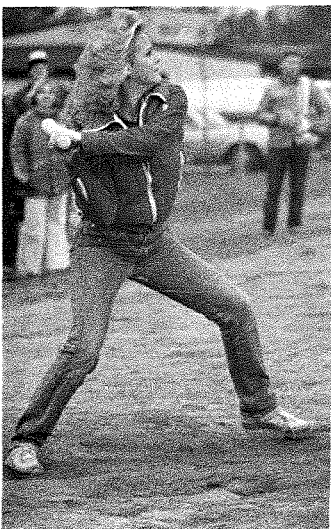
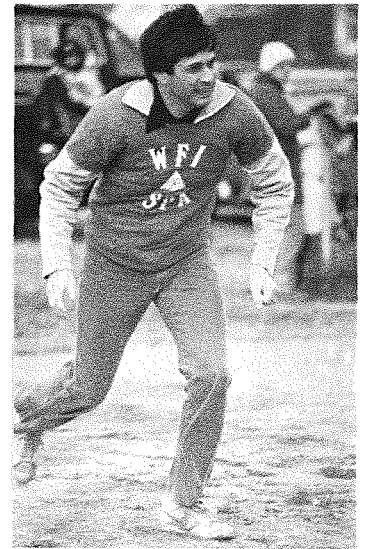
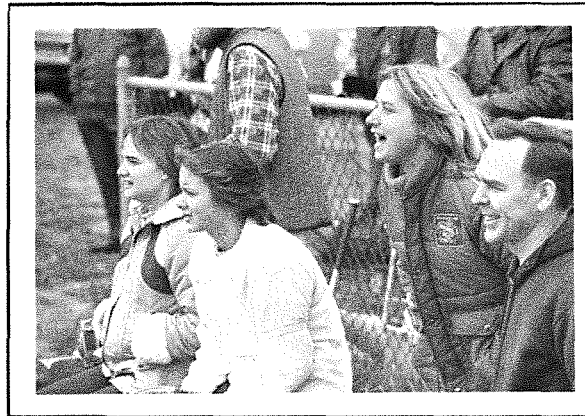
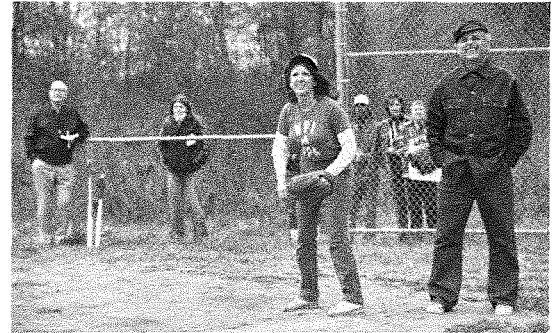
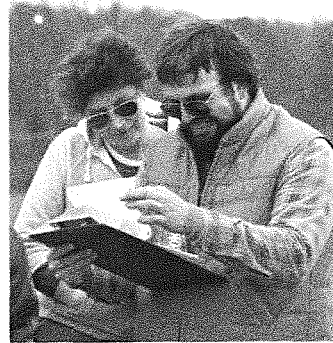
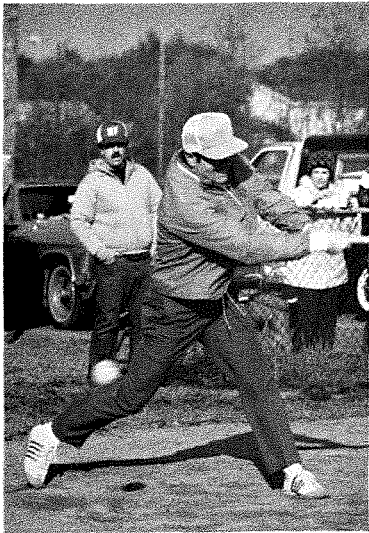


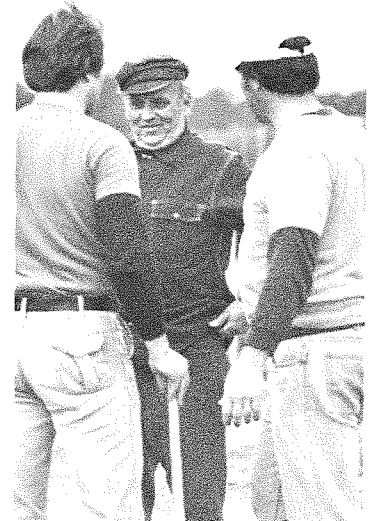
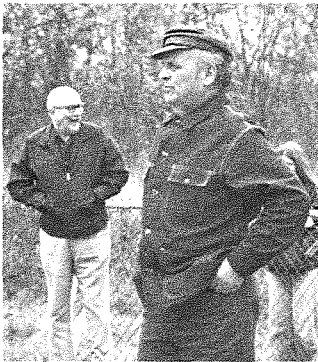
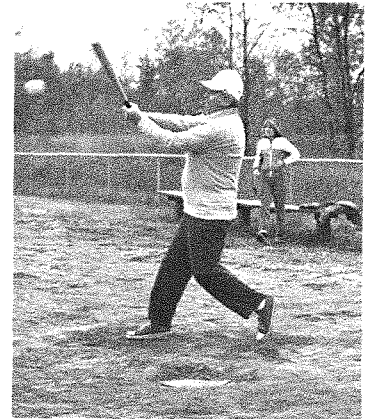
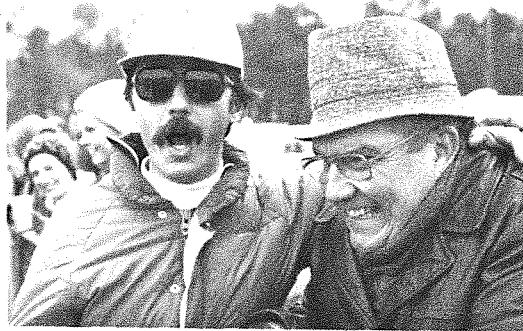
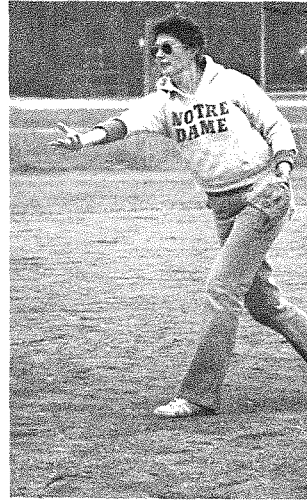
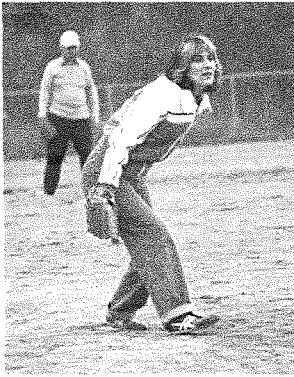
Vic and **Ardee Freeman** (r) couldn't resist some good-natured ribbing with Customer Service Manager **Gene Tarabek** (center). Ardee, in to wish Vic well, undoubtedly pointed out the merits of wintering in Hawaii.

ENGINEERING'S CHALLENGE — ACCEPTED AND MET BY MARKETING DEPARTMENT . . .

In the most recently played WFI softball game, the Marketing Department (of which we are a member) rose to the challenge of the Engineering Department, beating them 16 to 11.

Players on camera provided by stringer photogs **Harold Schulte** and **Monte Visser**.



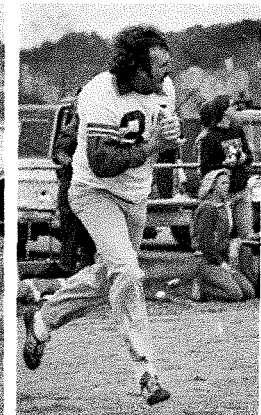
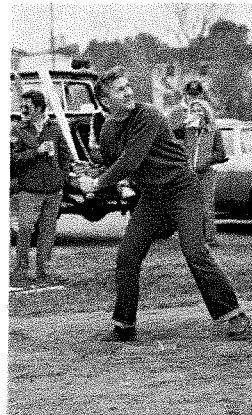
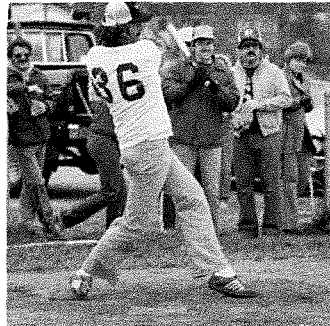
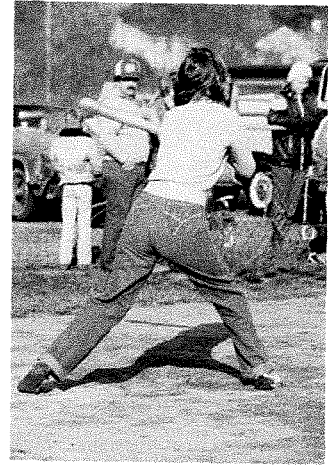
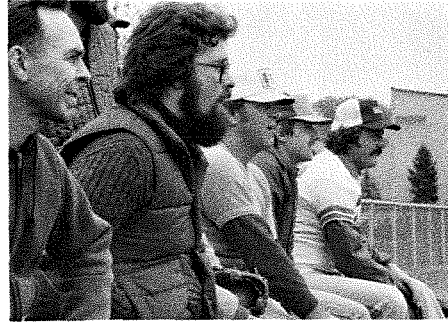
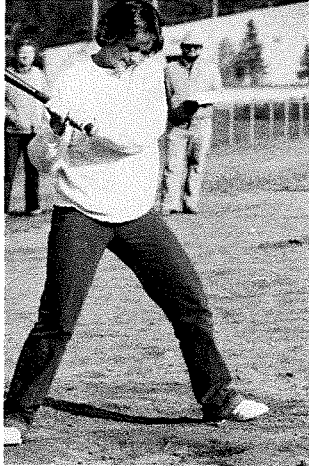
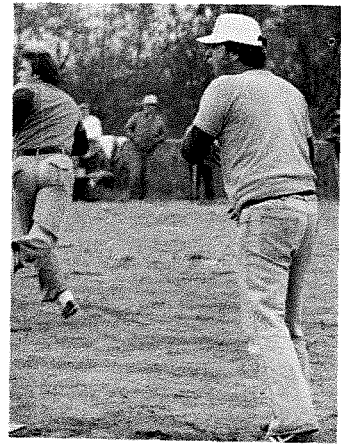
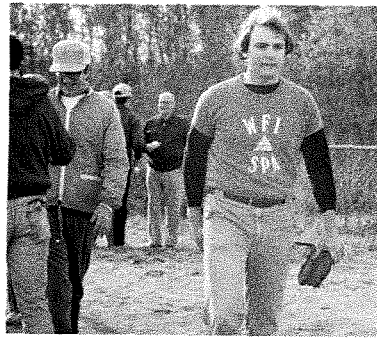
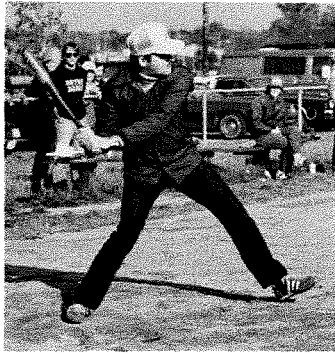


Engineering's athletes include:

Marcia Batten, Ken Rinkenberg, Lynn Wilhelm, Carl Overmyer, Stan Bikowski, Lorrie Doyle, Ron Barrier, John Gottlieb, Larry Baker, Kathy Sells, Tom Burmeister, Kathy Gosa, Ron Slater, Tammy Bukrajewski, Jim Donnelly, John Pokorski, Monte Visser, Barbara Kraft, Mark Lambrix, Mike Vance, Bob Morrison, Manager; George Delio, Umpire.

Marketing Department champs include:

Larry Holcombe, Manager; Joe Ponteri, Ted Kostilnik, Jackie Mazurkiewicz, Lorrie Pfender, Diane Price, Gina Enders, Paul Myers, Rod Johnson, Tom Mott, Gary Weil, Bill Berger, Larry Savage, Pat Nagy, Dick Fenska, Larry Huemmer.



AFTER THE GAME . . .

Chief Engineer **Curt West** good naturedly “pays up” (for liquid refreshment consumed at the game). Marketing’s **Ted Kostilnik** graciously accepts!